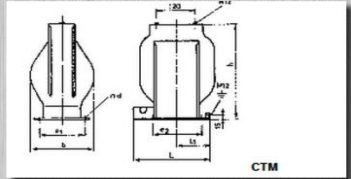


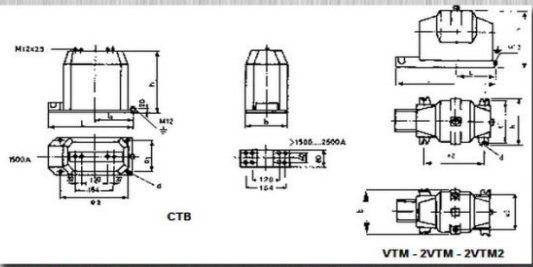
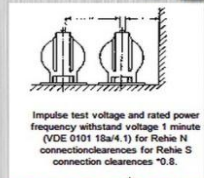


MEDIUM VOLTAGE & LOW VOLTAGE INSTRUMENT TRANSFORMERS (CURRENT TRANSFORMERS & POTENTIAL TRANSFORMERS)



CURRENT TRANSFORMER

Type	kV	P. Current max. A	Ther. Curr. max. kA	Weight kg	b	e1	e2	d	h	L1	L	m	n
CTM 20	3.6 - 24	1500	80	18	190	150	150	14	260	95	235	190	225
CTM 30-1	38	1500	80	25	220	150	150	14	360	95	235	270	285
CTM 30-2	38	1500	80	40	220	180	170	14	390	125	280	270	285
CTM 30-3	38	1500	80	50	240	205	280	14	390	160	335	270	285
CTB 10-1	3.6-17.5	2000	80	20	148	120	300	14	220	165	385	190	225
CTB 10-2	3.6-17.5	2500	80	25	178	150	300	14	220	165	385	190	225
CTB 20-1	12-24	2000	80	25	178	150	300	14	260	165	385	190	225
CTB 20-2	12-24	2500	80	35	178	150	300	14	280	165	385	190	225
CTB 30	38	2500	80	50	220	190	300	14	370	170	385	270	285



VOLTAGE (POTENTIAL) TRANSFORMER

Type	kV	Accuracy Class Rating 1. windings	z windings	Ther. Ratings VA	Weight kg	b	e1	e2	e3	h	L1	L	m	n
VTM 10	3.6 - 24	0.5	120	400	35	220	170	270		300	185	410	90	120
VTM 20	17.5-24	0.5	120	600	38	220	150	270		300	185	410	200	220
VTM 30	30	0.5	150	800	50	200	170	270		390	180	405	285	315
2VTM 10	3.6-12	0.5	120	400	35	250	280	270	210	300	185	410	115	115
2VTM 20	17.5-24	0.5	120	600	38	250	300	270	210	300	185	410	190	200
2VTM 30	30	0.5	150	800	60	370	300	270	320	390	190	430	340	360
2VTM 20-2	3.6-24	0.5	90	800	1000	40	250	300	270	210	300	185	410	190
2VTM 30-2	30	0.5	90	800	1000	65	370	300	270	320	390	190	430	340

LOW VOLTAGE CURRENT TRANSFORMER

TOROIDAL CURRENT TRANSFORMERS



Technical data:
 Rated primary current 5.....5000 A
 Class of accuracy: 0.5 ; 1 ; 3
 Rated voltage: 600V
 Rated secondary current: 5A (or 1A on request)
 Security factor: FS 5
 Burden VA : 5 ; 10 ; 15 ; 30
 Working temperature range: -20 to + 55 oC
 Nonflammable ABS plastic case, totally enclosed; built-in cover
 Rated frequency: 50/60 Hz
 Types :MSQ-A ;MSQ 30A ;MSQ 30T ; MSQ 30; MSQ 40 ; MSQ60 ; MSQ 100

Toroidal Current Transformers Specifications:

- 1-Primary rated current : 50A5000A
- 2-Standart Voltage: 0,72 kV
- 3-Secondary rated current: 1-1,5-2-5 A
- 4-Burden : 5400 VA
- 5-Frequency: 50 /60 Hz
- 6-Insulation : wound pvc band or paper
- 7-Protection or measuring use
- 8-We produce according to the specifications of customer requirement



9-We follow the standards TS 620, IEC 44-1, ANSI C. 57-13
 Supporting current instrument transformers are designed for the measurement and protection of the distributing facilities of high voltage for inner settings. Supporting current instrument transformers are arranged for the using in the Switchgear Manufacturers. The value of the secondary current is 5 A or 1 A with the possibility of combination. The classes of accuracy for the circuits of measurement are 0.2, 0.5, 1.3, for the circuit of protection are 5P, 10P. The transformers comply with the required class of accuracy within the values from 25% to 100% of rated load. The limiting working current is 120% of IN according to the agreement of producer and customer it is possible to supply other values, for example 200% of IN. Transformers types are constructed as transformers with single-turn or multi-turn primary winding. The up-to-date construction of these transformers allows the switching not only on the secondary side but also on the primary one. The primary switching can be easily mounted by the means of connection of two jumpers to the circuit by the means of two screws M8. The secondary winding is wound on the magnetic core made of directed plates, eventually made of the alloy of nickel, iron and copper "permalloy". The number of cores can be from 1 to 3 according to the request of customer. All active parts of transformer are compound-insulated with epoxy-mixture. This material performs both the electrical insulating and the mechanical functions.



The transformers types in distributors VH-IRODEL we produce and supply epoxy adapter, pin and special basic plate. In cases, where the supplement for the older types of transformers (by various producers) is required, we supply instruments CTS on the modified basic plates that have identical mounting spacing to spacing of the substituted types. Transformers CTS complied with all the tests according to CSN EN 6044-1.

